

LIFTING

TOMORROW

International Information Magazine of the **FASSI GROUP**

INNOVATION & SUSTAINABILITY

Fassi's electrical solutions

The HST system, the Plug-in system and the fully electric vehicle mark the beginning of a new chapter dedicated to the world of electric

TECHNO range

The new F1750R-HXP arrives on the market, a new reference point in the category with all the innovations of the TECHNO range

Sponsorship

Fassi takes to the track alongside the Mooney VR46 Racing Team during the 2022 MotoGP™ and Moto2™ World Championship season



FASSI



Share your photos of Fassi cranes at work with us



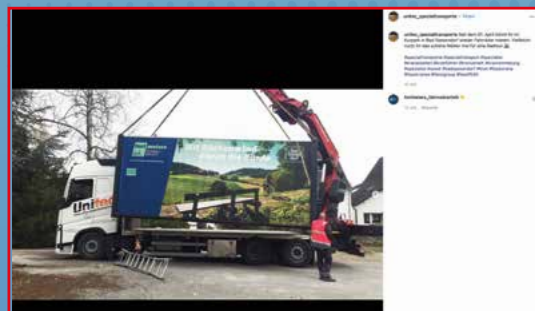
Fassi cranes operate worldwide in new and diverse sectors and locations. Their stories speak through the images sent by dealers and clients spread over five continents and posted over several months on Instagram. In this section, we have chosen and shared the posts (with the five Fassi hashtags) that have received the most likes in the period from January to July 2022.



#fassicrane
Lyma GmbH
5060 likes



#fassicranes
Fassi Official
722 likes



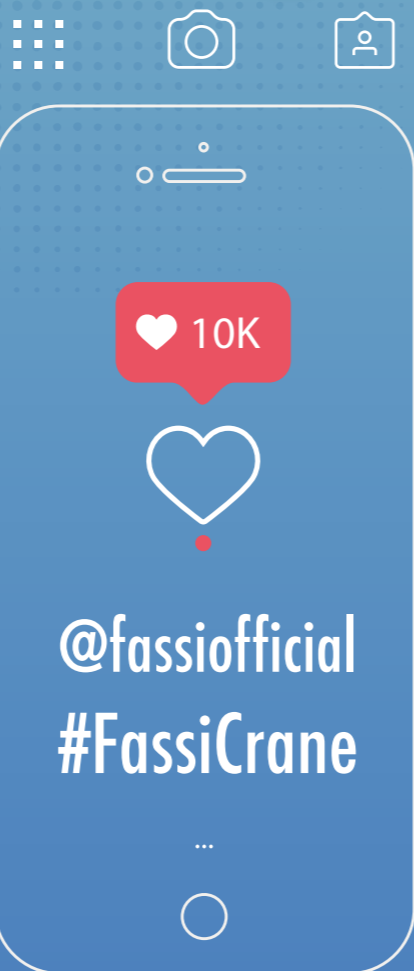
#fassigroup
Unitec Spezialtransporte GmbH
43 likes



#fassigr
Fassi Gru Firenze
620 likes



#fassifriday
Kogler
181 likes



We have given the future a new name

After a long, enforced break due to the Pandemic, one of the largest international events dedicated to the world of lifting is back after 3 years. Above all, **Bauma 2022 is presenting itself with an objectively different slant compared to past editions. The stage of the fair opens to a profoundly changed world, in a very complex international landscape, but with all the enthusiasm and pleasure of being able to attend such an important occasion.**

The Fassi Group is choosing exactly this opportunity to strongly convey its direction for the future, showcase all the innovations we have developed and emphasise our vision directed towards innovation and sustainability.

In telling all this, we realised that the very idea of “future”, in its most common meaning, goes beyond us. Thus, we found ourselves conceiving a new concept, capable of broadening our perspective with respect to our relationship with tomorrow.

When you look at the world through the lens of innovation and sustainability, you realise how important it is to share value. The future is a promise that we make not only to ourselves, but to others, in the awareness of our role, our task and our duties within a larger ecosystem.

Innovation is not just improvement, it is not just change, innovation is the will to make a new contribution in terms of value to the world. Innovation is not satisfied with finding answers, but searches for new questions. And, in the continuous discovery of unexplored terrain, we have a duty not to be satisfied. It is not enough to develop solutions that can respond to the new needs of today, we need to remember that we cannot compromise the possibility of future generations to satisfy their own. This is a sustainable approach to innovation that never forgets that we are part of the whole and that tomorrow exists if you build it today.

And so, **we have devised a new way of saying “future”, which reminds us of our commitment and our responsibility to others: here is the “fYOuture”, to build tomorrow together with innovation and sustainability.**



Foreground



P. 06

Innovation and Sustainability

Fassi has directed its strategy towards innovation and environmental sustainability, bringing cutting-edge solutions and technology to the market



P. 10

Fassi does electric in three ways

At Bauma, Fassi presented the three concrete and operational electrical solutions on the market: HST system, Plug-In and fully electric vehicles



P. 22

XR, the new range of stiff boom cranes

The world premiere at Bauma for the XR310, the new series of single boom cranes made by Fassi for the Southeast Asian market



P. 30

New releases from Marrel and Cranab

Marrel presents hooklifts designed for construction and, from Cranab and Vimek, new products in the name of technology and sustainability

p.06	Fassi: amid innovation and sustainability
p.10	Fassi does electric in three ways
p.18	The TECHNO range is growing: the new F1750R-HXP arrives on the market
p.22	XR, the new range of stiff boom cranes
p.24	With Next View Glasses, assistance becomes interactive and digital
p.26	Fassi UK illuminates the way in blackpool
p.30	There's an Ampliroll® for that
p.34	Cranab and Vimek play their aces
p.38	MotoGP: Fassi takes to the track with Mooney VR46 Racing Team
p.42	With Fassi, catalogues are available with a touch of the APP
p.44	The Fassi Group's digital project grows with fassigroup.com
p.46	Quality, safety and design with the Fassi helmet



CONTENTS

LIFTING TOMORROW
n.06/2022

Publication legally registered
at the Court of Bergamo
no. 20/2011 on the 30/08/2011

A Fassi Gru publication
via Roma, 110
24021 Albino (BG) Italy
tel +39.035.776400
fax +39.035.755020
www.fassi.com

Published by
Cobalto Srl
via Torquato Taramelli, 2
24121 Bergamo (BG) Italy

Managing director
Silvio Chiappuso

Editor-in-chief
Mauro Milesi

Printed by
Modulimpianti Snc
via G. Leopardi 1/3
24042 Capriate S. Gervasio (BG) Italy

Graphic design and layout
Cobalto Srl

FASSI: AMID INNOVATION AND SUSTAINABILITY



Fassi has directed its strategic choices towards innovation and environmental sustainability, bringing cutting-edge solutions and technologies to the market



#innovation&sustainability



Giovanni Fassi
President of the Fassi Group

“As president of the Fassi Group, I am personally committed with our employees and with the entire commercial and assistance network, to spreading and promoting greater attention to sustainability. In addition, we are making sure that business processes are managed appropriately to achieve the best results in terms of quality, environmental protection and health and safety. Social responsibility is very important, as is always being tangible, practical and operational in implementing continuous measures. Thanks to exclusive technologies, we have been able to optimise raw materials and processes in order to reduce the resulting impact from production, continuously increase quality and respect the environment, from the beginning of the supply chain through to the routine and extraordinary maintenance of cranes operating all over the world.”

The path on which Fassi continues to build projects, products and technologies points in a very specific direction, one in which innovation and sustainability co-exist. These are two essential objectives that are guiding the strategic choices of Fassi and of the whole group. Today more than ever, our commitment is in fact to develop solutions and work systems that allow production processes to operate in ever shorter times, with less energy and in total safety. All this is to safeguard the environment, which has become the real-world priority in the political, social and economic fields. Fassi and all the other companies in the group feel a strong responsibility to do their part by bringing cutting-edge and sustainable solutions to the market that are able to anticipate the real needs of our customer base. **These products and technologies can have a decisive impact on customer profit and environmental effects.**

And this is how Fassi over the years has continued to work on research, innovation and above all on the acceleration of digitisation processes, to be able to increase environmental sustainability. The tangible signs of this innovation process directed towards corporate sustainability are already there.

TECHNO RANGE

The result of this work is now called the TECHNO range, an evolution (but above all a revolution) in the world of cranes, which enhances and improves their performance, thanks to the sum of different and new features and technologies.

Fassi has introduced important innovations both at the structural and operating level of the crane, and from an electronics and digitisation point of view. These are innovations that have made it possible to increase machine performance and have less impact on the environment.

Speaking of the more mechanical aspects, the new decagonal “X-Design” section of the secondary boom and telescopic extensions



has led to a better distribution of the stresses between the guide shoe and the chassis beam, allowing the thickness of the latter to be reduced and consequently lowering the total weight of the crane.

The weight optimisation has two important

effects: on one hand, crane performance is increased, on the other hand, better load capacity benefits fuel consumption when the vehicle is unladen, leading to greater sustainability.

In terms of electronics and digitisation, with the TECHNO range Fassi has taken a further step forward in the control system and in the Internet of Cranes® with the new FX990, which, thanks to its two Ethernet lines, extends the connectivity of the crane to other devices and increases processing power.



NEXT VIEW GLASSES

Thanks to the NVG (Next View Glasses) system, official Fassi assistance supports technicians in the field, remotely and interactively, all over the world, without geographical limits and in any conditions. Its great advantage is its ability to share information in real-time, with the same effectiveness as if the support took place in person. Furthermore, by avoiding the mobility of technical staff, a more sustainable service follows.

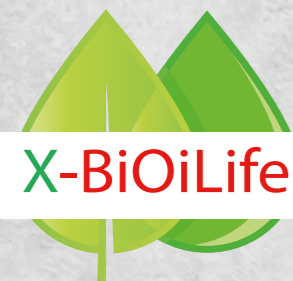


PAINTING SYSTEM

The Fassi Cranes painting system has been reconsidered in respect of the environment by changing the chemical components it uses. Years ago, the painting process was manual and used solvent-based paints. Today, however, the process is completely robotised, ensuring uniform coverage over the entire surface of the components, according to a specific programme.



The paints are made of polyurethane enamel with water-based epoxy primer and are free of cadmium, lead and solvents. They are therefore non-toxic, non-flammable and odorless, characteristics that lead to an improvement in work environments and minimise the emission of substances produced by the processes. All this affords greater environmental protection and higher resistance to atmospheric and weather events.



Fassi X-BiOILife hydraulic oil

The attribution of the OECD 301 B label to the high biodegradability (95%) of Fassi X-BiOILife hydraulic oil, guarantees, in the event of leaks, the reduced impact on the environment thanks to the very low contamination rate. Its special molecular structure gives the product chemical stability, excellent resistance to oxidation and excellent lubricating power, covering the needs of most construction machinery and mobile hydraulic systems.

FASSI DOES **ELECTRIC** IN THREE WAYS



At Bauma, Fassi presented three tangible and operational electrical solutions to the market: the HST system, the Plug-In system and a crane setup on a fully electric vehicle. These three options are environmentally sustainable and can present opportunities for operators who need to work in urban settings or industrial warehouses

The HST and Plug-In systems and crane installations on a fully electric vehicles. Three different solutions by Fassi for those who need to work in electric mode.

In fact, market demand for more sustainable and environmentally friendly solutions is also pushing the world of industrial vehicles and lifting machinery to accelerate the energy transition and develop electric-powered vehicles.

It's a process that is also developing in those areas where, until a few years ago, it was thought that heat engines were irreplaceable. Therefore, as manufacturers of industrial vehicles are rapidly presenting their electric drive models, **Fassi Gru is no exception and has developed a series of solutions that are proposed as the ideal complement to these new fully electric models.**

The process of the electrification of lifting operations has also accelerated and Fassi presented three proposals at Bauma that mark a decisive, but above all immediately operational, step in answer of this challenge, as Fassi Export Sales Manager Emilio Bertazzi tells us in this interview.

The first step was taken last year with the presentation of the new Fassi HST (Hybrid Smart Technology) system which allows a wide range of cranes (from Micro up to 40 tm lifting capacity) to work in electric mode, and therefore without emissions produced by exhaust gases, but also without noise.

In recent months, two other solutions have been added: the new Plug-In system and the first fully electric vehicle equipped with a Fassi crane, which will be presented at Bauma.



HYBRID



Emilio Bertazzi
Export Manager
Fassi Gru Spa



THE PROCESS OF THE ELECTRIFICATION OF LIFTING OPERATIONS HAS ALSO ACCELERATED AND FASSI WILL PRESENT THREE PROPOSALS AT BAUMA THAT MARK A DECISIVE, BUT ABOVE ALL IMMEDIATELY OPERATIONAL, STEP IN ANSWER OF THIS CHALLENGE.

The HST system allows a wide range of cranes to work in fully electric mode. How does this translate into operations, in terms of flexibility, operating costs and sustainability?

The use of the HST system allows the operator to work in settings where there are limitations for polluting emissions and noise emissions. For example, I'm talking about historic town centres or during indoor lifting operations. Using the HST system, and therefore the electric motor, for this type of work means limiting pollution to a minimum and avoiding those annoying noises that a normal truck with a crane in action can emit. Choosing this electric and sustainable solution absolutely does not affect working functionality: you can work electrically for up to three hours and the crane guarantees the same performance. It becomes

an opportunity because it allows the operator, among other things, to intervene in situations where, for example, only an electric vehicle can gain access. The advantage of the hybrid is the ability to recharge the lithium battery pack and HST system via the vehicle's heat engine during journeys.

What market needs does the HST system answer?

It answers demands that come mainly from urban operations and for interventions with platforms and baskets where small movements are required for prolonged periods, perhaps within industrial warehouses or in built-up areas where there are restrictions.

In the Nordic countries, the use of electricity has had an important boost and the market is definitely growing.

We know that the HST system can be used on cranes with capacities of up to 40 tm. When needs arise beyond this limit, what solutions can be found?

The HST system operates at a low voltage (48V-51V). To make it work on larger machines and therefore on higher voltages, technology that not everyone can access is required and special licenses are required for maintainers. Thinking specifically about the needs of those looking for electric solutions for cranes over 40 tm also, we have created the Plug-In system which consists of a three-phase unit that is mounted on the truck.

What does this system consist of and what are the advantages for those who use it?

The Plug-In system is a three-phase power pack integrated into the crane-truck installation that allows you to operate while connected to the electricity grid. It is a solution that represents a cross between a hybrid vehicle and a fully electric vehicle. There are two advantages: the first is of an economic nature because it has an attractive cost, the second concerns the possibility of allowing cranes up to 90 tm to work in electric mode.

Does it have limits?

The limit is that it must be connected to the mains of the HST system which, having its own battery, is completely independent.

The first fully electric installation developed in collaboration with Volvo will be presented at Bauma. On one side, an F195A.1 and on the other a Volvo FE vehicle. What are the particular features of an installation of this kind?

The Volvo truck is fully electric and has the advantage of being able to communicate with the vehicle using the Fassi FX-Link system. The truck has its own software that manages the engine powers and, thanks to FX-Link the two machines can exchange information to work as efficiently as possible. Together with Volvo we have chosen a vehicle for urban use: with a short wheelbase and a typical transport configuration for this type of setting.



So what are the sectors and settings the Fully Electric and Plug-In systems can benefit?

The Plug-In system can be used by those who move machinery in enclosed places and therefore for those who can work connected to the electricity network. Fully electric, on the other hand, is perfect for those urban settings, especially in Northern Europe, where the use of electric vehicles is required and motor vehicles are increasingly discouraged.

Is the future in the world of lifting electric?

Electricity is certainly the future of the world of transport and we, being linked to them, are adapting. And already today we are providing

concrete alternatives to the customer who needs electric and sustainable solutions to work in certain settings. Obviously, the growth of the sector changes from country to country and if in Southern Europe the electric truck still does not have any kind of facilitation, in Northern Europe the electric truck has become an opportunity thanks to deductions and lower taxation for those who buy them.

Developing tangible projects in the world of electric for Fassi is an opportunity that goes beyond the issue of sustainability....

We started working on electric solutions out of necessity: on the one hand, it was out of a

strong sense of responsibility we had towards the environment, on the other it was because certain types of jobs now require electric. For example: you buy the HST system both to have a lower environmental impact but also, and above all, because it becomes the only way to be able to do certain jobs in a warehouse without having to invest hundreds of thousands in an electric truck.

What role do Fassi's electric options play on the energy transition front and in your opinion can they be considered an incentive for sustainability?

For years we have channelled many of our strategic choices in the direction of environmental sustainability: the energy used in our production plants is guaranteed to come from renewable sources for almost 500,000 kWh (2021 data), we have adopted a water-based painting system, biodegradable hydraulic oil and we continue to work on projects and systems that go in this direction.

All without diminishing the features of the cranes and their qualities...

Exactly. All our "green" projects are real and concrete and guarantee the same crane speeds, performances and operations.

THE PLUG-IN SYSTEM CAN BE USED BY THOSE WHO MOVE MACHINERY IN ENCLOSED PLACES AND THEREFORE FOR THOSE WHO CAN WORK CONNECTED TO THE ELECTRICITY NETWORK. FULLY ELECTRIC, ON THE OTHER HAND, IS PERFECT FOR THOSE URBAN SETTINGS, ESPECIALLY IN NORTHERN EUROPE, WHERE THE USE OF ELECTRIC VEHICLES IS REQUIRED AND MOTOR VEHICLES ARE INCREASINGLY DISCOURAGED.

HST, the hybrid system for cranes with capacities of up to 40 tm

HYBRID

The Hybrid Smart Technology system allows a wide range of cranes (from micro up to those with a lifting capacity of 40 tm), to work in fully electric mode, without emissions produced by exhaust gases but also without noise. Thanks to the HST system, the crane works with the truck with the engine off from its own electric motor powered by the battery pack. The system is also safe because it operates at a low voltage (48V-51V) and therefore does not require special operator training of the, as would be necessary with medium-high voltage systems.

From the mains, the double charging system provides a voltage of 220V single-phase

from 16A, with a charging time of nine hours from a completely empty battery, which itself is an unlikely situation because the battery recharges with the truck engine while on the move. Therefore, in the evening, when the vehicle returns to its headquarters, part of the recharging has already taken place. Furthermore, this operation can also be carried out with the crane at work and with the AC generator running. The latter, through the power take-off (which can be disconnected) of the vehicle, recharges the batteries when the vehicle is in motion. Its charging voltage is 48V and in 4-5 hours it guarantees a recharged battery pack from completely empty.

ZERO-EMISSION SOLUTIONS are extended with the Plug-In system

The Plug-In system allows cranes with capacities from 40 tm to 90 tm to operate while connected to an electrical outlet. The system consists of a three-phase power-pack integrated into the vehicle installation which is positioned laterally to the truck and connected whenever it is necessary to work in electric mode.



FASSI AND VOLVO TOGETHER for the first fully electric vehicle installation

A totally, "fully electric" crane-truck combination that comes directly from Sweden. On the one hand a Fassi Sverige crane, an F195A.1, on the other a Volvo vehicle, specifically a Volvo FE.

Together they make up the first fully electric vehicle installation which will be previewed at Bauma.

The Volvo FE is designed for medium-sized loads with a GVW of 27 tonnes and a 400 kW engine with a maximum torque of 530 Nm for a distance of up to 200 km and a charging time of 2 to 11 hours, depending on the mode.

Volvo also offers the FH Electric flagship model in 8x2 and 8x4 versions with a GVW of 44 tonnes, ideal for mounting

larger articulated cranes. On this model the engine runs on two or three electric motors up to a maximum power of 490 kWh (666 hp), completed by the i-Shift gearbox. With a battery pack from 180 to 540 kWh, the distance range is approximately 300 km, with a full charge time estimated at 2.5 hours in DC (250 kW) or 9.5 hours with CS (43 kW).

F195.1.24 xe-dynamic

CAPACITY CLASS:
Maximum lifting moment 19.2 tm/188 kNm
MAX. HYDRAULIC REACH:
up to 14.7 m
CRANE DIMENSIONS MOUNTED ON THE BODY:
from: w. 2.5 m, l. 0.85 m, h. 2.25 m



Volvo truck FE vehicle

Total weight on the ground: up to 27 tonnes
Battery capacity: 200-265 kWh, 3 to 4 batteries.
Distance: Up to 200 km
Charging time (to full charge):
• 11 h with AC (22 kW)
• 2 h with DC (150 kW)
Driveline: 2 electric motors, 2-speed gearbox
Performance: Up to 225 kW (300 hp) of continuous power



#Fassicranes



THE TECHNO RANGE IS GROWING AS THE NEW F1750R-HXP ARRIVES ON THE MARKET

A better load capacity, redesigned geometry and an increase in performance that add to all the revolutionary innovations in the range. Here is the Fassi F1750R-HXP TECHNO, the new reference point in the category

The second is as good as the first. After the F1450R-HXP TECHNO, which officially opened the curtain on the Fassi TECHNO range, the second crane in the range has also arrived on the market, once again marking a technological and innovative revolution in the world of articulated cranes. **We are talking about the F1750R-HXP TECHNO, with its completely redesigned geometry, both on the main column and the secondary boom, contributing to a capacity class of 132 tm.**

The new TECHNO range offers many innovations with the new crane, starting with the decagonal "X-Design" section of the secondary boom and telescopic extensions, up to the new FX990 electronic control system.



The decagonal "X-Design"



FX990 electronic system



DECAGONAL SECTION

The decagonal “X-Design” section of the secondary boom and telescopic extensions allows for a better distribution of the stresses between the guide shoe and the chassis beam, allowing for the thickness of the latter to be reduced and, consequently, the weight too. It also improves load capacities, particularly in the vertical configuration, resulting in a 57% performance increase over the traditional hexagonal arm design.

FX990 ELECTRONIC SYSTEM

FX990 is the new electronic control system to which a series of important hardware

and firmware innovations are connected: a new control unit, a new FX901 touchscreen display, a new limiter and dynamics control firmware, a new FSC / TECHNO stability system and new FassiLim software. The presence of two Ethernet lines, which are added to the three CAN-bus lines, allows for greater connectivity power and, through a new access portal, the possibility of multi-device connection to the crane, thanks to its own 4G WiFi network.

L826 HYDRAULIC EXTENSION

The crane is equipped with the new L826 hydraulic extension model, already available with

the F1450R-HXP. Thanks to this new system, it becomes easier to use the crane in combination with the winch.

With the winch it becomes possible to fold the crane with the pulley mounted on the extension and the winch rope installed, while the intermediate pulley, extremely compact and light, is removed.

It is a solution that satisfies the need to simplify set-up operations with the addition of a winch and extension, but is not available if the hydraulic extension is equipped with additional functions with a conduit system. In this case it is necessary to remove the pulleys when putting the crane at rest.

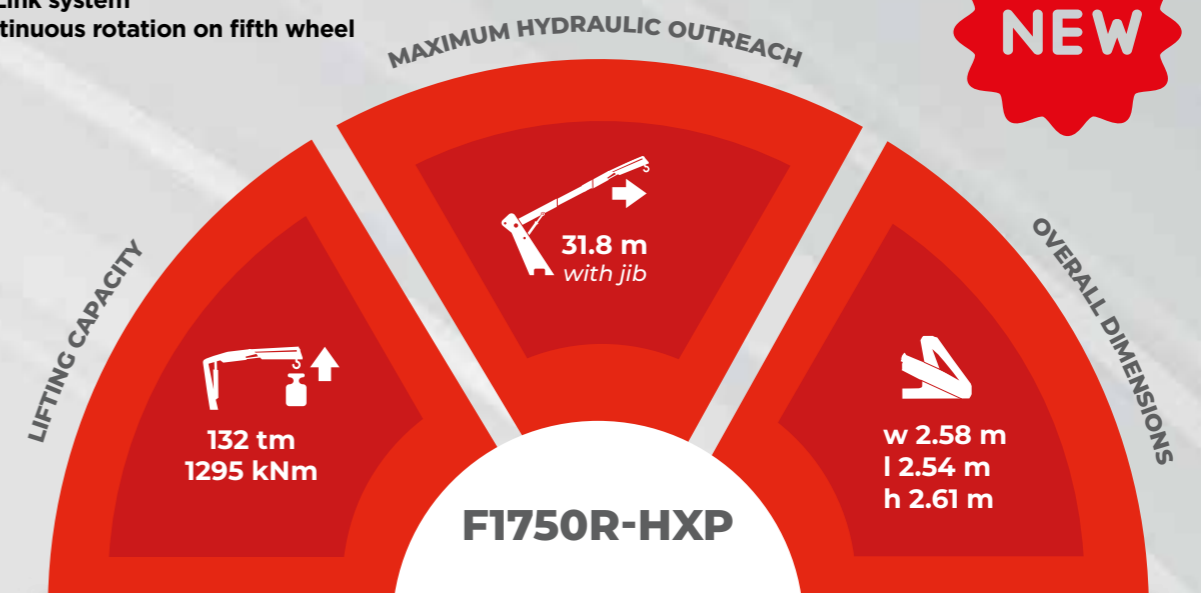
Electronic / hydraulic equipment:

- IMC integral control system
- FX990 control unit
- D900 digital hydraulic distributor
- V7S radio remote control unit
- ADC dynamic control
- FX901 touchscreen display
- Electronic flow sharing
- XF system

Features:

- Double connecting rod
- XP device
- ProLink system
- Continuous rotation on fifth wheel

**Fassi Gru
F1750R-HXP
TECHNO**



XR, THE NEW RANGE OF STIFF BOOM CRANES

The world premiere at Bauma for the XR310, the new series of single boom cranes made by Fassi for the Southeast Asian market. Also present: the XR710

Fassi has always been a multi-sector company that, thanks to its technology, innovations and products of excellence, creates solutions that meet the ever-changing needs of its customers.

Specifically designed for Asian customers, various markets in South America and Africa, Fassi has built a new crane of the new range of “Stiff boom cranes” (stiff single-boom cranes) through its Fassi Asia Pacific division, based in Nilai, near Kuala Lumpur, Malaysia.

These are the XR310, which has made its world debut at Bauma, and the XR710, a single-sided model with a maximum lifting capacity of 7 tonnes, designed in Italy and produced in Malaysia.

The two series have been developed specifically for this geographic area and, more generally, for international markets where the demand for this type of crane is high.

The goal is to develop a range of “single boom cranes”, products that have important differences compared to the cranes produced so far by the Fassi Group.



FEATURES

The “single boom cranes” lift loads exclusively with the winch, which is therefore a fundamental component of the machine. In this case, the winch is positioned in the internal part of the column and is housed between the two side walls.

A modern solution was chosen for the stabilisation system that aligns it with the state of the art version already available on Fassi cranes, allowing the operation of both the crane’s stabilising jacks and any additional stabilisers.

To meet the demands of these markets, two possible versions of the command post have been designed. As an alternative to the seat on the post, it is possible to opt for a ground control station almost identical to that normally used on Fassi cranes.

TWO VERSIONS FOR THE XR710

The XR710 is available in two versions, the XR714 and the XR716. The last digit identifies the number of extensions of the crane: in addition to the main boom, the XR714 model consists of four telescopic extensions, six for the XR716 model.

The XR710 crane is equipped with a standard package of solutions that comes as part of the standard outfitting, which guarantee operational safety: the FX200 load limiter, a winch limit switch system, hydraulically piloted block valves and two LED lights to ensure maximum operation, even in conditions of poor visibility.

“Through this new range of cranes, we want to approach the single boom crane market that could be considered more basic than that of the Fassi cranes we normally produce.

Single boom cranes are machines that require some non-European markets including those of Asia, South America and Africa,

which are more accustomed to that type of crane. Thus, through our Fassi division in Malaysia, we have created the XR710 and the two XR716 and XR714 versions. This is an opportunity that once again demonstrates Fassi’s ability to respond to the needs of any type of market.”



Emilio Bertazzi
Export Manager
Fassi Gru Spa



TECHNICAL CHARACTERISTICS: XR710

XR714

- 4 telescopic extensions
- 1 main arm
- Maximum lifting capacity: 4750 kg

XR716

- 6 telescopic extensions
- 1 main arm
- Maximum lifting capacity: 7100 kg



SOLUTIONS THAT MEET THE EVER-CHANGING NEEDS OF ITS CUSTOMERS. THE GOAL IS TO DEVELOP A RANGE OF “SINGLE BOOM CRANES”

WITH NEXT VIEW GLASSES, ASSISTANCE BECOMES INTERACTIVE AND DIGITAL

#innovation

NEW



The new Fassi remote assistance system in the field allows to intervene in an effective, interactive and timely manner, in any conditions and without geographical limits



On one hand, the operator wearing a pair of smart glasses equipped with a camera. On the other, an official Fassi service technician who, connected via the internet and using the view provided by cameras on the glasses, guides him through a series of operations to resolve any critical issues, even from hundreds of thousands of kilometres away.

It is not science fiction but reality. A reality that Fassi has called Next View Glasses and which allows official Fassi assistance to support technicians in the field around the world by simply using a digital platform and a pair of glasses equipped with cameras and connections.

Operator equipped with Fassi Next View Glasses



Remote technician's point of view in real-time



THE ADVANTAGES OF NEXT VIEW GLASSES

- Effective field interventions thanks to the immediate and interactive support of Fassi assistance
- Real-time information sharing
- Reduction in machine downtime
- Assistance without geographical limits and in any conditions
- Hands-free operation



- Lightweight and compact
- Ergonomic
- Clear and intuitive colour projection on the lens (Si-OLED display)
- Wireless LAN, Bluetooth, MicroUSB connectivity
- Microphone for audio
- Headphones with mini plug
- Safety cords
- Battery life of 6 hours

OPERATION:

The maintenance technician connects to the Fassi service centre and activates the video call by wearing the Smart Glasses connected to the headset and microphone. The information that the service centre provides displays on the lenses and the camera integrated into the glasses transmits real images to the Fassi Service Centre. In this way, all the information is provided interactively with the support needed to carry out the intervention.

The Smart Glasses are light and compact, they are ergonomic and are also suitable for eyeglass wearers. They allow you to operate hands-free, and have a battery life of six hours. With their use, the operator has the great advantage of interactive and real-time information sharing, with the same effectiveness as if the support took place in person. Moreover, by avoiding the mobilising the personnel of the operations centre in Italy, a more sustainable service is achieved.

FASSI ILLUMINATES THE WAY IN BLACKPOOL

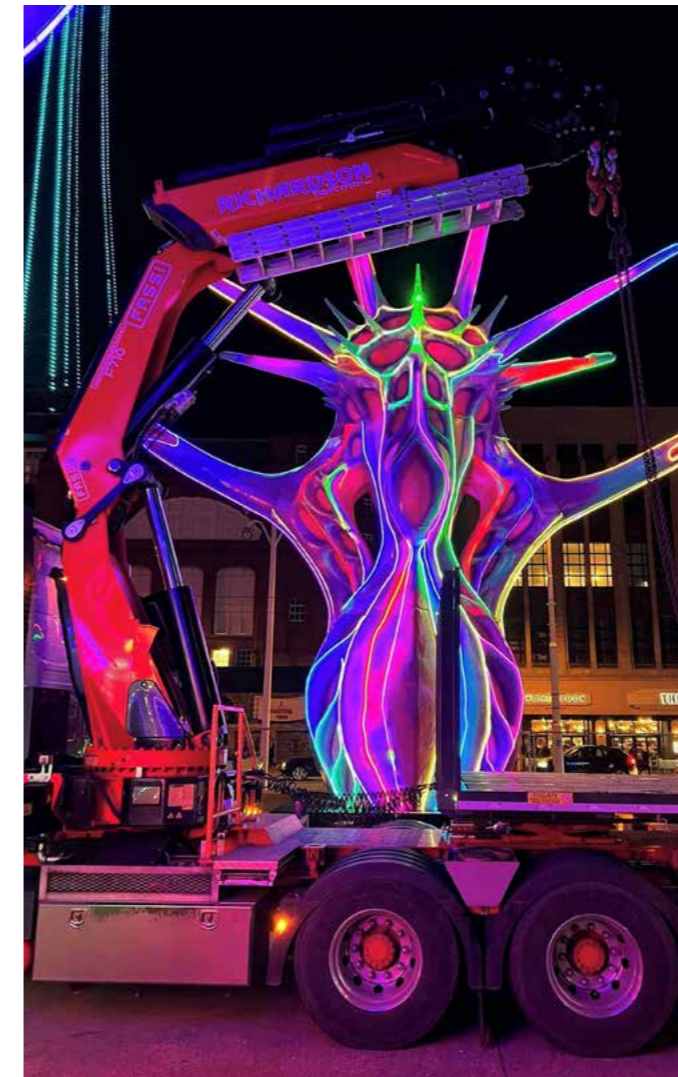
We catch up with Richardson Traction as they use their FASSI 710RA to light up the seafront



Founded in 1980 by Gary Richardson, Richardson Traction is a road haulage firm based in Thornton, Lancashire. Working with their well-established network of partners and clients throughout the UK they have been providing transport services for a range of industry sectors for the past 40 years. The team aims to provide customers with a range of high standard road haulage services and has recently acquired new specialist equipment including heavy duty FASSI cranes, refrigerated trailers, forklifts and low loaders enabling them to efficiently manage complex jobs.

Setting up the famous Blackpool Illuminations on the sea front certainly presents its challenges. It's no surprise in the UK that a key factor is the great British weather - wind and rain. Another hurdle is the dark and noisy environment. As it gets later in the day there are many people around and the sound of Blackpool's infamous attractions can make it difficult to hear. The combination of the FASSI crane and the skill of the operator however are a great match for the job in hand.

THE EFFICIENT WORK OF RICHARDSON TRACTION HAS ENSURED THAT BLACKPOOL LIGHT POOL HAS BEEN A REGULAR CUSTOMER OVER THE YEARS, AND THEY HAVE BUILT UP A STRONG WORKING RELATIONSHIP

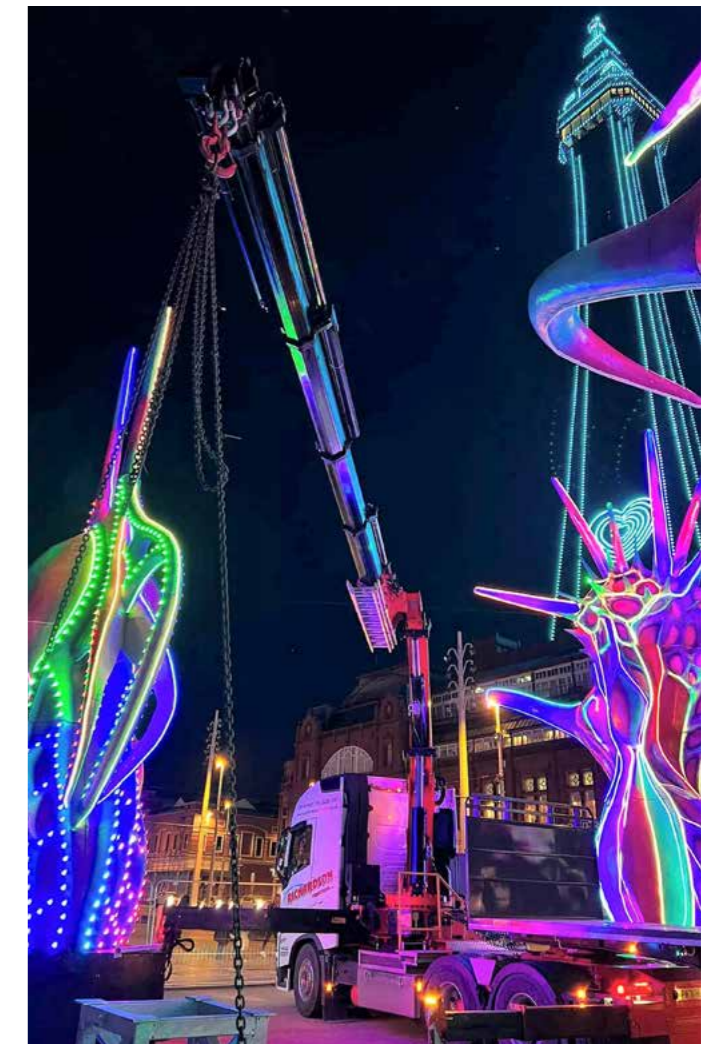


The efficient work of Richardson Traction has ensured that Blackpool Light Pool has been a regular customer over the years, and they have built up a strong working relationship. Having become so impressed with the FASSI F710RA and its reach, it came as no surprise to company owner Wayne Richardson that Blackpool Light Pool managed to secure funding to acquire their own crane. The good news for FASSI UK is that it is to be a FASSI F710RA this time on a DAF with the order once again going to The Crane Centre.

The FASSI F710RA.2.27 has seven extensions giving a reach of 18.25m where it can still lift 2,660Kg. The combination of the D850 Digital Multifunction Distributor Bank & RCS radio control allows 'mm' precision placement of the delicate lighting installations.

David Darbyshire, FASSI operator for Richardson Traction says: "I have worked on and off for Richardson Traction for over 10 years. The first new truck-loader crane the company bought was a FASSI 820RA on a Volvo FH 500 built by The Crane Centre at Sandbach. It's been a great crane. With an increase in work-load we then acquired a FASSI F455A second-hand whilst looking for a new truck. The company then opted for a FASSI 710RA with 18 metre reach to better suit our customers' needs".

David goes on to say: "I like the Volvo FH 540 combined with the FASSI. I especially like the safety features and the way Volvo Trucks and FASSI have worked together to show errors on the dash".





THERE'S AN AMPLIROLL FOR THAT



To meet the expectations of customers in diverse sectors, Marrel proposes complete ranges of specific products for the construction industry, local authorities, military activities and the world of recycling

Marrel continues to develop new products and accessories to provide the most appropriate response to the markets in which it is currently present and for future new markets. Among these, the flagship model of the company is the Ampliroll® hooklift, designed to load and unload with reduced cycle times.

The patented Marrel hooklift guarantees greater efficiency and productivity. Its design combines performance, lightness and efficiency, making it easier to load containers, while the Marrel hooklift ensures high lifting power in the most extreme conditions.

There are three ranges designed and built to meet specific needs.



A range designed for tradesmen, SMEs and local authorities. It can be installed on light commercial vehicles and trucks up to 7.5 tons. The design and use of high-tensile steels reduce the weight of the Ampliroll® hooklift, making it one of the lightest on the market. This increases payload and improves productivity.



The go-to range for companies in the recycling environment, construction and agricultural sectors, well known for its performance, reliability and simplicity of use. Invented by Marrel, the tilting frame provides unrivalled power when it comes to body lifting. Its specific kinematics make it less prone to stress, especially in harsh operating conditions.



The Flex model brings great versatility to light rigid trucks. Renowned for its light weight, Ampliroll® hooklift provides an increased payload capacity and greater performance. The sliding arm kinematics ensure that a wide variety of body lengths can be accommodated. Several models of hooks are available: heights or hydraulically adjustable (depending on power).

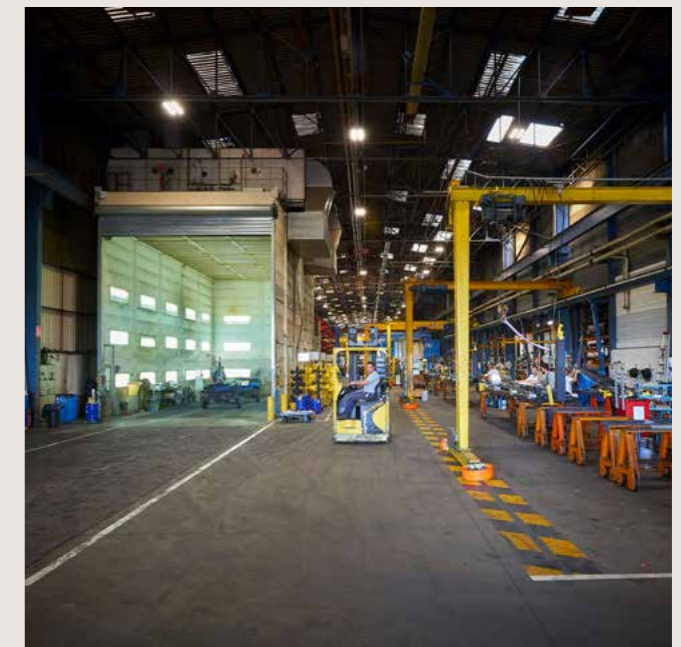


New factory extension in Andrézieux

To meet the growing demand from global markets, work is currently in progress on a 3,500 m² factory extension, the first phase of which (increase of capacity by 50% and modernization of industrial processes), will be delivered at the end of 2023.

New painting and assembly lines will be integrated and spaces will be optimised to improve production processes.

With the ongoing expansion, the Andrézieux factory will reach 30,000 m².



A NEW CEO FOR MARREL

Arnaud Thieulin is the new CEO of Marrel. Chief Financial Officer of the CTELM Group (Marrel, Fassi France, Decauville, Miltra Paris Nord and Miltra Provence) since 2016, he has now been appointed CEO of Marrel and will be the guarantor of the ambitious development project of Marrel Group.

"I am grateful for the trust that has been given to me. The challenge is a big one, but I can count on the whole fantastic Marrel team to grow the company in France and internationally. We continue to develop new products and accessories with the aim of answering to the needs of the markets in which Marrel is currently present but also in new markets."

Arnaud Thieulin
CEO Marrel



A NEW DEPUTY CEO FOR MARREL

Grégory Thevenon, Industrial Director of Marrel since 2015, has become Deputy CEO and will lead the numerous projects related to the industrial development of Marrel, while maintaining his current functions.

"Our teams are currently working on the 3,500m² extension of the Marrel's factory. The first phase will be completed in 2023 and thanks to the extension we will increase our production capacity and many industrial processes will be modernized. All this will allow us to meet the growing needs of our distributors all over the world."

Grégory Thevenon
Deputy CEO
Marrel



#Cranab&Vimek



Cranab presents the RZ13TR, the new crane for the range dedicated to the world of recycling. Vimek arrives on the market with three new machines in the name of productivity and sustainability: the 404 T8, the T8 DUO and the Vimek 610.4. These are upgrades and innovations that further broaden the horizons of the two Swedish companies of the Fassi Group



FASSI GROUP



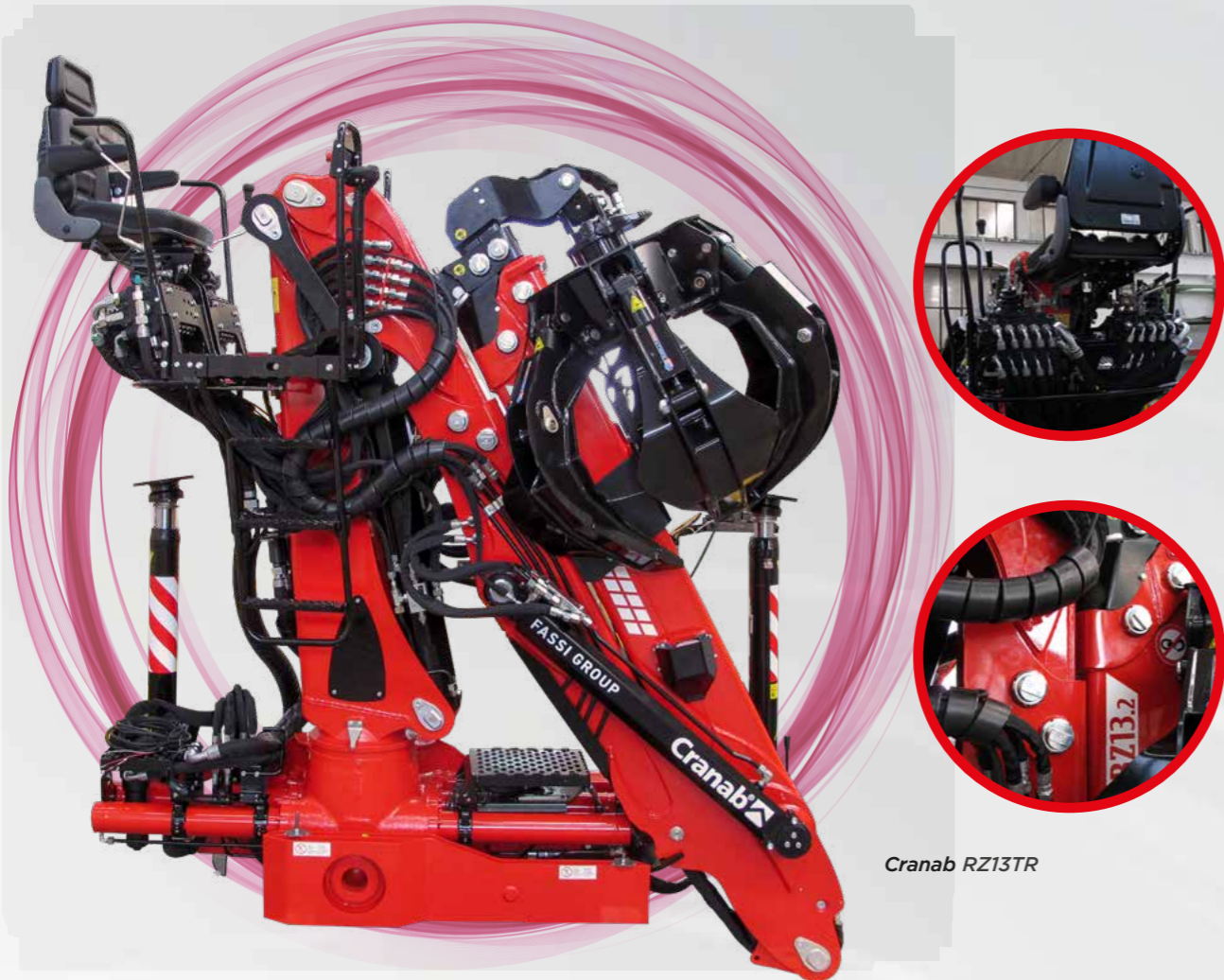
FASSI GROUP

Cranab and Vimek will present four new products in the ranks of their ranges at Bauma 2022.

For Cranab, we are talking about the new RZ13TR which expands the range of cranes dedicated to the recycling and material handling sectors.

For Vimek these are three updates for as many existing forestry machines: the Vimek 404 T8 and Vimek T8 DUO will be the new and improved versions of the previous Vimek 404 SE and Vimek 404 SE DUO respectively and the Vimek 610 becomes the Vimek 610.4. from the previous Vimek 610 SE.

CRANAB AND VIMEK PLAY THEIR ACES



Cranab RZ13TR



Vimek 404 T8 DUO



Vimek 610.4

it is a level 5 engine that does not require AdBlue and can run on HVO diesel. With this update, other features that increase productivity and improve the working environment have been enhanced," says Johannes Nilsson, CEO of Vimek.

Another noteworthy innovation is the current Vimek 610.4, a new alternative felling head, suitable for felling waste and work timber. The unit is intended for forest owners who have to cut down both the thickest and the thinnest trees.

NEW FOR 2022

- Cranab RZ13TR
- Vimek 404 T8
- Vimek T8 DUO
- Vimek 610.4



Vimek 404 T8

THE NEW CRANAB RZ13TR

Cranab's RZ range is designed and built for the world of recycling and material handling. These are reliable, efficient and highly technological cranes. The cranes are equipped with protected hoses and first-rate hydraulics and are customised with a state-of-the-art, electronic stability monitoring system.

The RZ13TR is distinguished by the fact that, in addition to the secondary arm, the main arm is also extendable.

This means that the crane is more compact at rest; the secondary boom is no longer under the crane base when folded.

The new RZ13TR has been designed mainly for handling ferrous scrap, an activity for which cranes with compact dimensions at rest are highly appreciated.

VIMEK RANGE UPGRADES

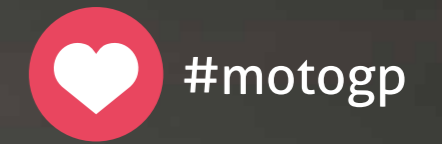
The new models of the Vimek 404 and 610 ranges are equipped with a brand new 55 kW Caterpillar diesel engine with a V configuration, the same used for the next generation Vimek 870.1 forwarder.

The new drive unit allows for better control, provides more torque and lower fuel consumption, does not require AdBlue and can also run on HVO (Hydrotreated Vegetable Oil) fuel.

This update was seen as an opportunity to also improve other functions that increase the productivity and quality of operations, thanks in part to the reduction in the weight and overall dimensions of the motor unit.

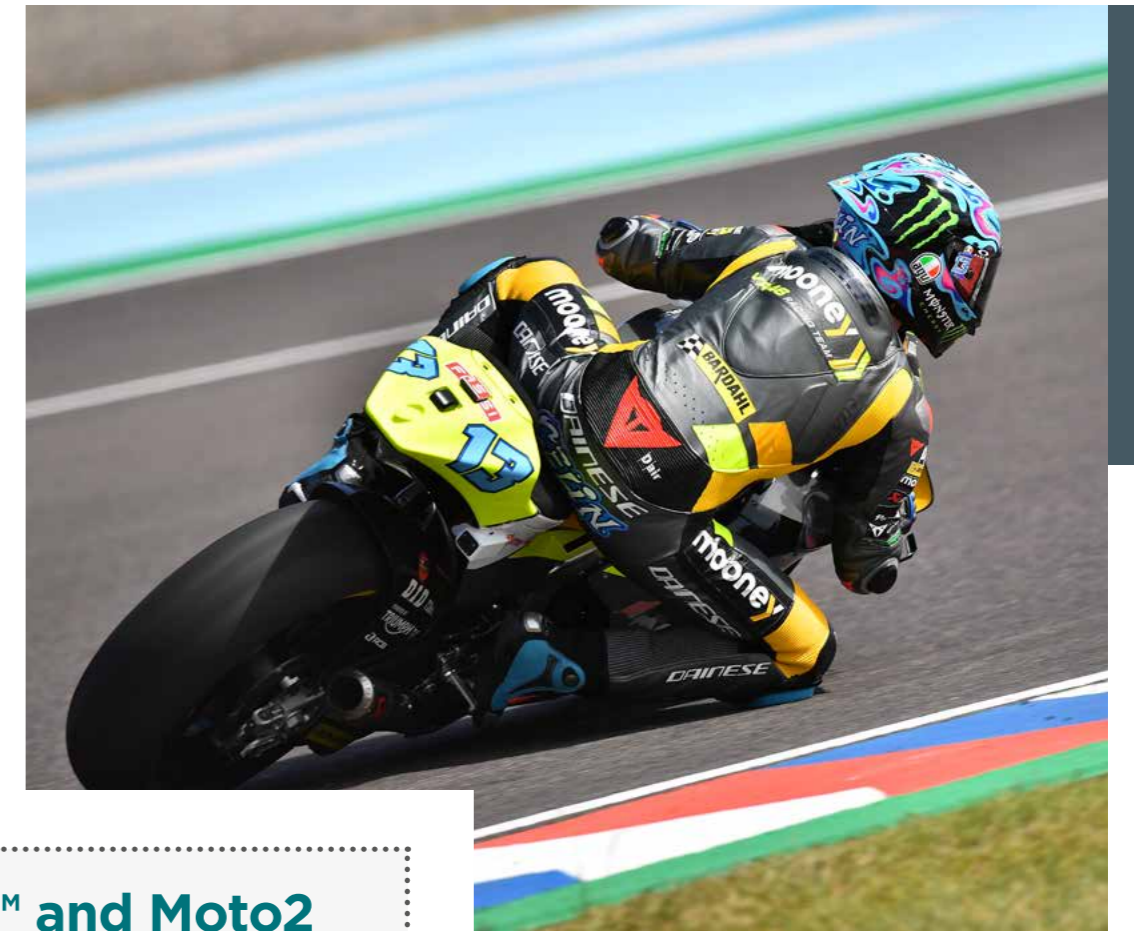
"The new engine has great features, with high torque and low fuel consumption; moreover,

MOTOGP: FASSI TAKES TO THE TRACK WITH MOONEY VR46 RACING TEAM



The Fassi logo adorns the tails of the Mooney VR46 Racing Team motorcycles during the 2022 MotoGP™ and Moto2™ World Championship season





MotoGP™ and Moto2 world championship

20 Grands Prix

Start: 6 March 2022

End: 6 November 2022



Two Ducati Desmosedici:
n.10 driven by Luca Marini
and n.72 by Marco Bezzecchi

Two Kalex:
Celestino Vietti Ramus on n.13
and Niccolò Antonelli on n.28

Twenty Grands Prix in as many circuits in five continents. Nine months of racing on two Ducati Desmosedici and two Kalex cycles. A 2022 MotoGP™ and a Moto2™ World Championship that Fassi has chosen to race, as a partner, together with the Italian Mooney VR46 Racing Team.

It is an important year for Valentino Rossi's racing team which has made its debut in MotoGP™ as a team in this 2022, fielding two Ducati Desmosedici: Luca Marini's n.10 and Marco Bezzecchi's n.72 Ducati on which Fassi has embossed its logo, clearly visible on the rear tails of the motorbikes. The Mooney VR46 Racing Team's project to launch and grow future two-wheeled champions has been achieved in multiple categories. In fact, during 2022 the team also fielded two riders in Moto2™ on Kalex bikes: Celestino Vietti Ramus with the n.13 and Niccolò Antonelli with the n.28.

Strong team spirit and an exceptional history of wins constitute a legacy to be passionately passed down to younger generations. It is this which is crucial for continuous leadership in the future of this sport as well as great technical knowledge directed towards innovative choices powered by research and the use of increasingly technological materials.

These are some of the distinctive features of the Mooney VR46 Racing Team which confirms its determination to achieve ever more ambitious results.

Shared values and winning motivations are the basis of the collaboration between Fassi Gru and the Mooney VR46 Racing Team. Attention to detail, passion and the desire to do well are the hallmarks of the Bergamo-based company and they immediately found harmony with the approach of the team, which gathers together the

best talents of the VR46 Riders Academy, a project conceived and managed by the champion from Tavullia.

During this season, Fassi Gru also confirmed its link with the image of the 2018 Moto2™ world champion, Francesco "Pecco" Bagnaia, with the appearance of the company's own logo on the visor of the Turin rider's helmet.



WITH FASSI, CATALOGUES ARE AVAILABLE WITH A TOUCH OF THE APP

Fassi has developed an application that can be downloaded on smartphones and tablets, entirely dedicated to the world of catalogues

It is called Fassi APP Catalogues and with a few simple and practical clicks it allows everyone to view and download the general Fassi catalogues.

The new application by Fassi, available from the App Store and Google Play, was designed with the intention of making the use of the catalogues on smartphones and tablets more practical and functional. All users can consult and download the general catalogues, while those working in the Fassi sales network can access a series of additional functions, including the catalogues of different cranes. The Fassi general catalogue is the most widespread and well-known technical commercial document by Fassi customers all over the world. It was exactly for this reason it was decided to create an ad hoc application to facilitate its use. The general crane catalogues are combined with those of the Techno Chips to have a clearer and more comprehensive

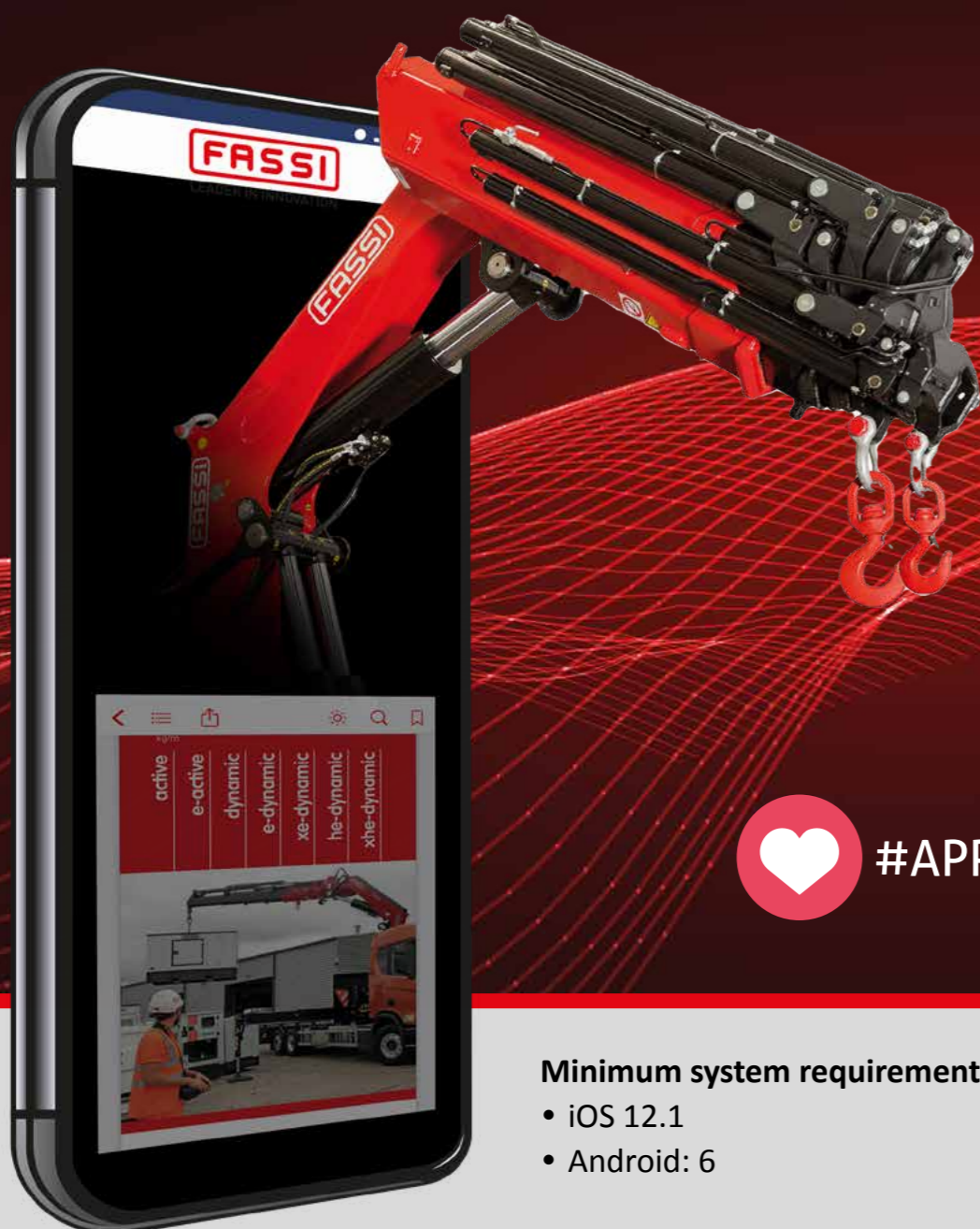
knowledge of all the technologies that accompany the products.


The catalogues are regularly updated, in all languages and the various versions.

Using the APP is very simple. Just download it from the Apple or Google stores, depending on your device, and choose the user language and market.

In fact, the Fassi catalogues include different editions according to the different countries they are read in: versions using both metric (kg / m) and imperial (lbs/ ft) measurement systems are available for European and extra-European markets.

Through the App you can access the public area (open to all without registration) and the reserved area (with login for the sales network) where you can view the catalogues of the individual cranes grouped into the light, medium and heavy-duty crane ranges.



 #APPCatalogues

Minimum system requirements:

- iOS 12.1
- Android: 6



iOS



ANDROID

App sizes

- iOS: 30 MB
- Android: 60 MB

Minimum RAM memory
Android: 4 GB
Suggested disk space:
at least 0.5 GB

THE FASSI GROUP'S DIGITAL PROJECT GROWS WITH FASSIGROUP.COM

Fassigroup.com is the new online portal of the Fassi Group. It is a project that has been taking shape over several months, with the aim of further increasing the strength and identity of the companies and of the group as a whole



Talking about oneself is a way to strengthen identity. **Putting one's history and achievements on paper is the best way to increase awareness, strength and notoriety.** This is especially so when the reports speak of products recognised internationally for their quality, technology and innovation and of companies present all over the world, each with its own specialisation and attentive to the demands of its respective market.

Fassigroup.com is the Fassi Group portal where all the news, new products, presentations, interviews and stories from Fassi, Marrel, Cranab, Jekko Slagkraft and Vimek coexist. These are six companies that together make up a group with presence in 62 countries, a total staff of more than 1000 and activity in numerous sectors, thanks to the specialisation

and flexibility of its various companies.

Today Fassi is a global organisation, a flexible group, alert and, above all, ready to face the difficulties that the forces of the global market present to us.

The digital fassigroup.com project was conceived specifically with the aim of communicating "loud and clear" the fundamental elements of the group's identity, its uniqueness and the goals that it is achieving step by step, with an awareness that a shared communication tool such as this, that can reach the entire world, can become an opportunity to grow, not only as a group but also as a brand.

The target audience is broad and includes stakeholders, distribution and resale networks, human resources and existing and prospective customers.

FASSIGROUP.COM IS AVAILABLE IN THE FOLLOWING LANGUAGES:

-  Italian
-  English
-  French
-  German
-  Spanish

MAIN SECTIONS OF THE ONLINE PORTAL:

- 
- The Group
 - The Sectors
 - Products
 - Blog
 - Case Histories
 - Applications
 - Events
 - Sustainability

Within the website, each company has its own space to communicate product news, its participation in events and fairs, new technologies, important projects, interviews, case histories and applications.

Navigating between the menus and pages, you will find quality content with the aim of creating a solid group narrative, capable of rising well beyond mere commercial and product areas, touching on important issues such as, for example, those of innovation, sustainability and safety.

Fassigroup.com is a living and constantly evolving project, ready to launch on social networks too and to constantly grow in terms of content, text, video and images.

QUALITY, SAFETY AND DESIGN WITH THE FASSI HELMET



The Fassi safety helmet for crane operators was designed and developed entirely in Italy with the collaboration of the company LAS Helmets, with the aim of guaranteeing operators complete safety without losing sight of design and comfort

Red, in full Fassi style. **Comfortable, to guarantee the operator a positive working experience. An ergonomic and modern design, making it a treat for the eye as well. Cutting-edge materials because quality cannot be neglected. And above all, safe because safety comes first for Fassi.**

In short, the perfect synthesis of the Fassi philosophy that the company LAS Helmets has been able to transfer in every detail, shape, material and technical feature of the new Fassi helmet for crane operators.

Thanks to its ABS shell, ergonomic padding, innovative “Easy turn 3D” system and a soft strap attached at four points and crossed at the back, this helmet offers an excellent fit and better attachment to the head. It’s a design that makes the helmet light and ergonomic and also improves its performance thanks to a specially designed ventilation system. Practicality is also guaranteed by the quick fastening/unfastening system, made according to EN397 standard. The product is completed by its fitting space for a headlamp, the

connections for earmuffs/headphones and a range of three models of visors (transparent, tinted and mirror). The helmet has been developed for a surprisingly comfortable experience while respecting all the features necessary for total safety.

It perfectly fits the shape of the head and thanks to special ventilation openings in its outline, optimal ventilation of the helmet is always guaranteed. The helmet for crane operators is perfect even in critical working conditions.

Technical features

- ABS outer shell
- Ventilation: 8 holes
- Weight: 340 gr
- Size: 54-61 cm
- Approval: EN 397
- COOLMAX padding with sanitised INTERPOWER treatment
- Easy Turn 3D size adjustment system
- Lamp holder clips
- Fittings for visor and earmuffs/headphones



FASSI SAFETY HELMET





LIFTING TOMORROW

International Information Magazine of the **FASSI GROUP**

Discover more on
fassigroup.com

